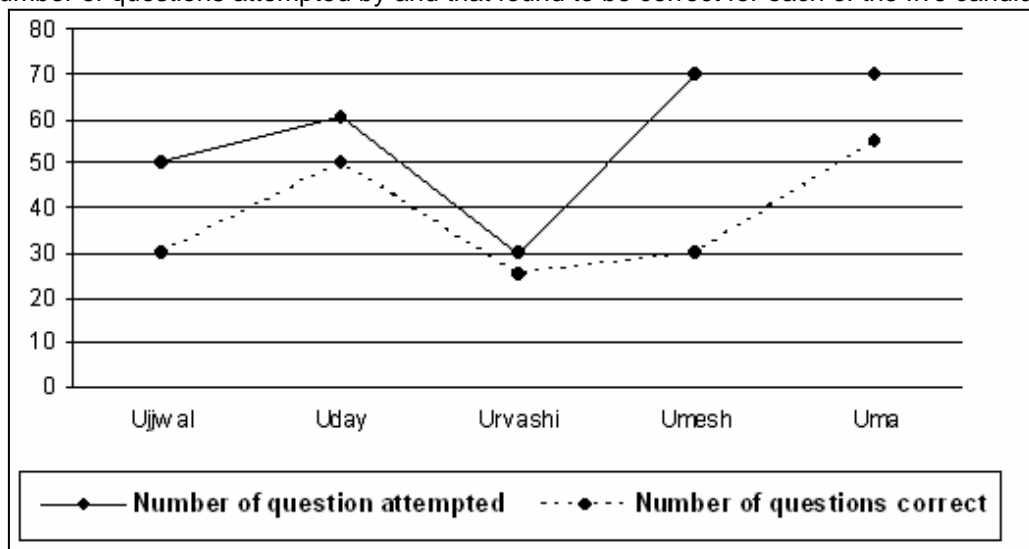


LINE GRAPH - I

Direction for the questions (1-3): These questions are based on the data given below.

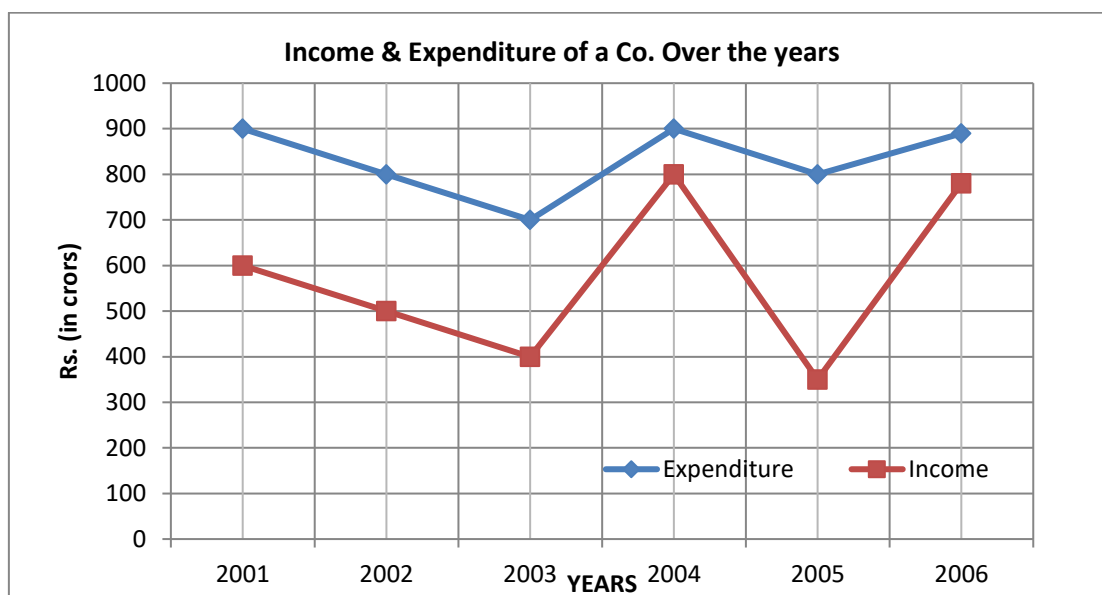
Five candidates appeared for an examination in which the total number of questions was 100. The line graph below represents the number of questions attempted by and that found to be correct for each of the five candidates.



To compute the net marks, 1 mark was awarded for every correct answer while $\frac{1}{3}$ mark was deducted for every wrong answer. The candidates were ranked such that the person who scored the maximum net marks was ranked first while the person who scored the least net marks was ranked fifth. In case of a tie in the net marks, the candidate who made less number mistakes was ranked better.

- Find the ratio of the marks obtained by the candidate ranked 1st to that obtained by the candidate ranked fourth.
 - 3 : 1
 - 3 : 2
 - 25 : 8
 - None of these
- Find the marks of the person ranked third.
 - $23\frac{1}{3}$
 - $24\frac{1}{3}$
 - $21\frac{2}{3}$
 - None of these
- Find the rank of Urvashi.
 - 2
 - 4
 - 3
 - 5

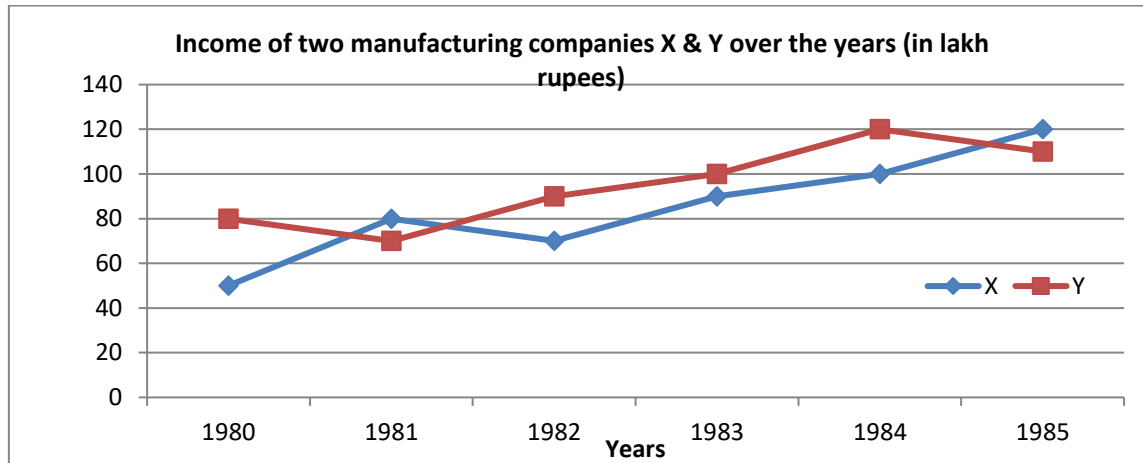
Direction for the question: Analyse the graph/s given below and answer the question that follows:



- What was the percentage decrease in income from 2002 to 2003?
 - 80%
 - 50%
 - 40%
 - None
- What was the approximate percentage increase in income from 2003 to 2004?
 - 100%
 - 40%
 - 20%
 - none

6. The total income of which of the following pairs of years was equal to the expenditure in 2004?
 a) 2001 & 2002 b) 2001 & 2003
 c) 2002 & 2003 d) None of these
7. In which of the following years was the percentage of expenditure to the income, the highest?
 a) 2001 b) 2002 c) 2003 d) 2004
8. In how many of the given years was the expenditure more than the average expenditure of the given years?
 a) 4 b) 3 c) 1 d) 6

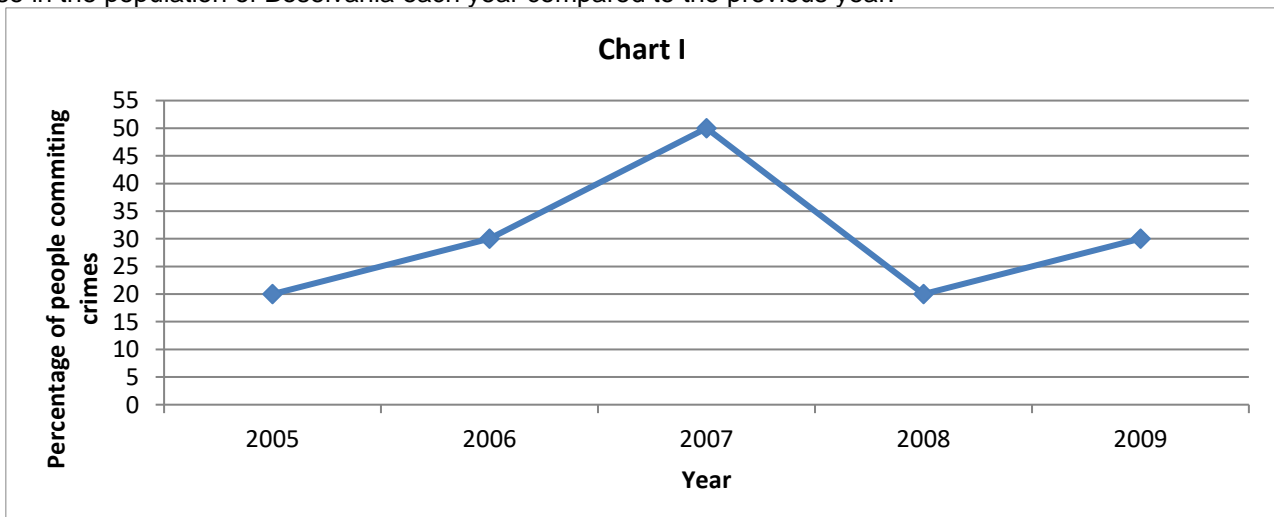
Direction for the question: Analyse the graph/s given below and answer the question that follows:

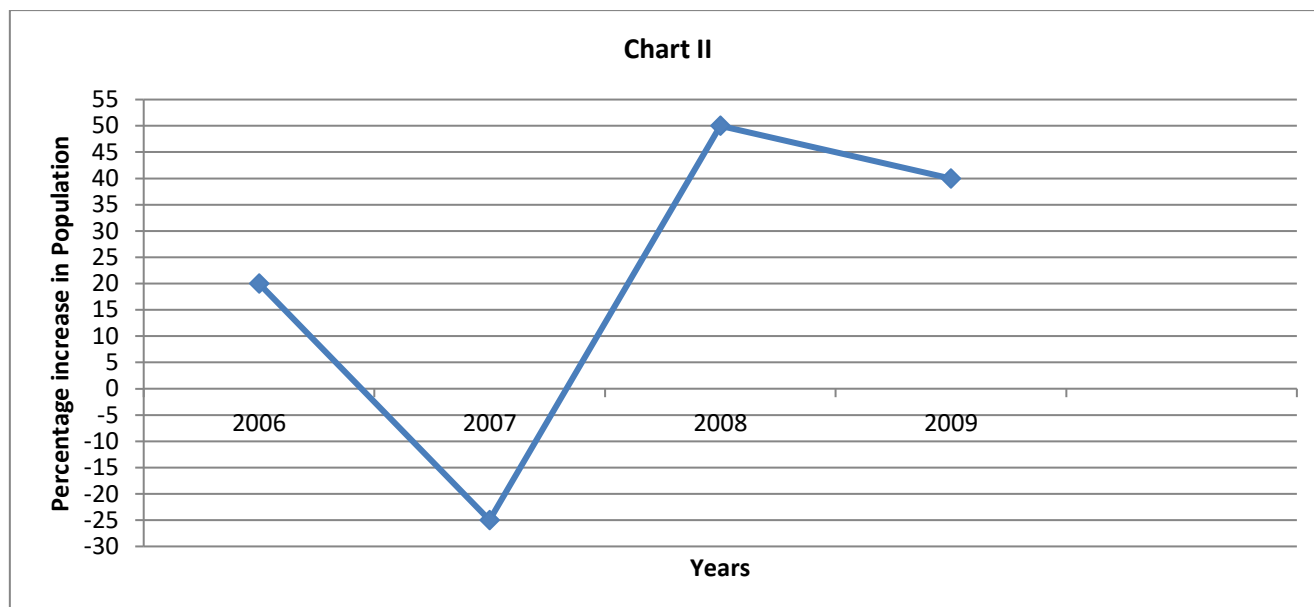


9. Average income of company 'X' per year is approximately what percentage of the average income of company 'Y' per year?
 a) 70.25% b) 110% c) 115.68% d) 90%
10. For which of the following combination of company and year is the percentage increase in income from the previous year the maximum among all such given combinations?
 a) Company Y-1982 b) Company Y-1984
 c) Company X-1981 d) Company X-1982
11. What is the percentage decrease in income of company Y in 1981?
 a) 12.5% b) 20% c) 40% d) 150%
12. Income of company 'Y' in 1982 is what percent of income of company 'X' in 1985?
 a) 75% b) 133.33% c) 63.64% d) 150%
13. If company 'X' had a profit of 25 % in the year 1980, what approximately was its expenditure in that year?
 a) Rs. 20 lakhs b) Rs. 30 lakhs
 c) Rs. 40 lakhs d) Rs. 60 lakhs

Direction for the question: Analyse the graph/s given below and answer the question that follows:

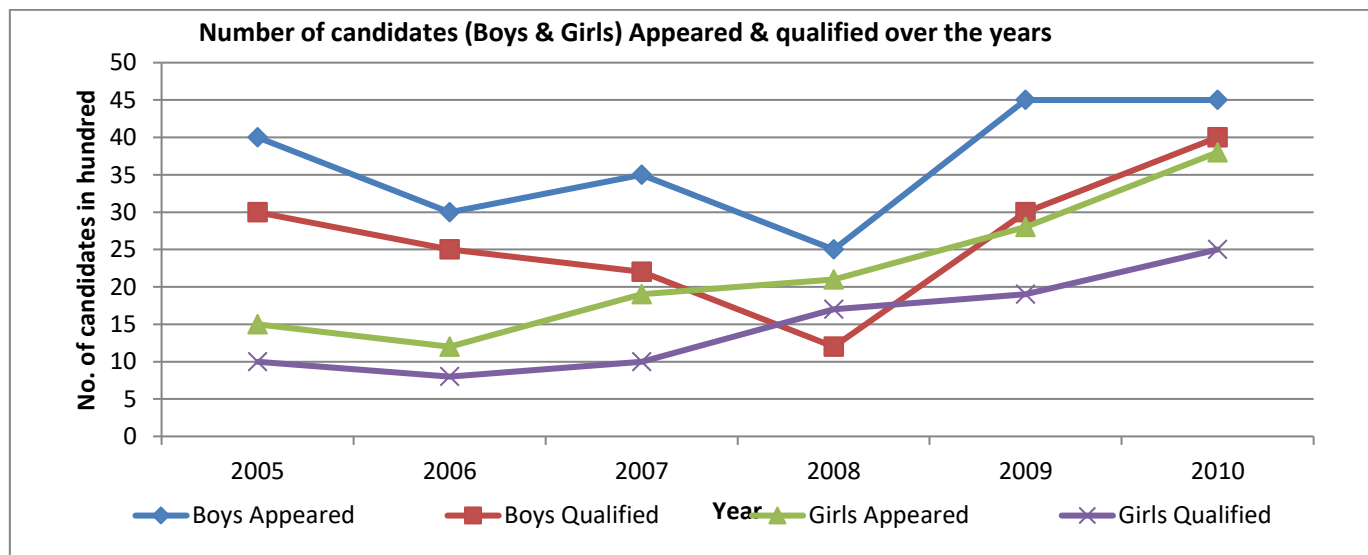
Graph I gives the percentage of people committing crimes each year in Boselvania and graph II gives the percentage increase in the population of Boselvania each year compared to the previous year.





14. In which year among the given years (2005-2009) was the population in Boselvania the third highest?
 a) 2005 b) 2006 c) 2007 d) 2008
15. What is the ratio of the number of people committing crimes in 2007 compared to 2008?
 a) 4:1 b) 5:3 c) 2:1 d) 3:2
16. In which year among the given years (from 2005-2009) was the number of people that committed crimes the second lowest?
 a) 2005 b) 2006 c) 2007 d) 2008
17. What was the percentage of the population in 2008 compared to 2006?
 a) 112.5% b) 137.5% c) 125% d) 100%

Direction for the question: Analyse the graph/s given below and answer the question that follows:

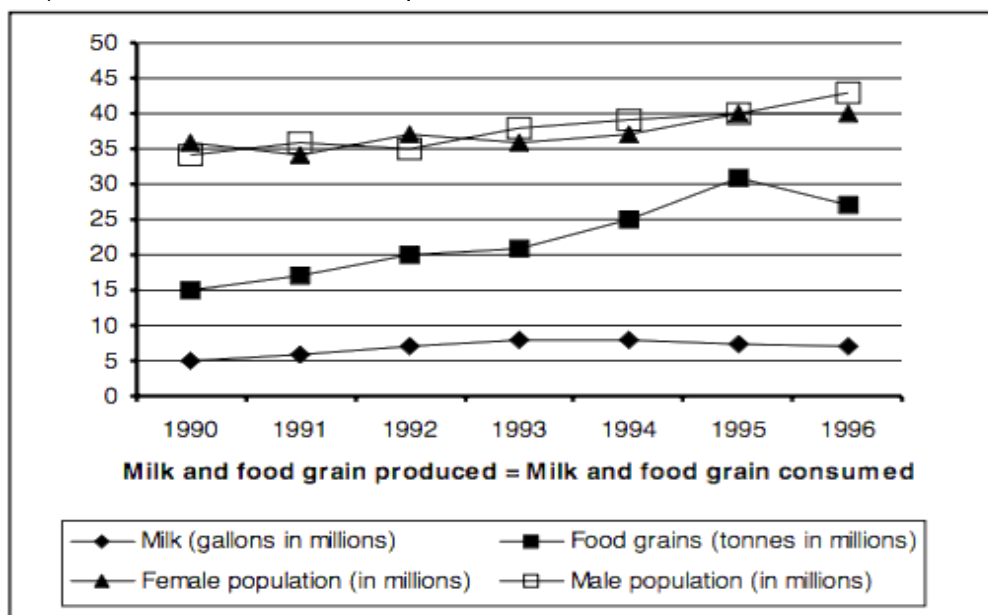


18. What was the percentage increase in the number of boys qualified from 2008 to 2009?
 a) 173% b) 175% c) 180% d) 171%
19. The total number of girls qualified in 2006 and 2007 together was exactly equal to the number of girls appeared in which of the following years?
 a) 2009 b) 2010 c) 2006 d) 2007
20. What was the approximate percentage of boys qualified to boys appeared in 2007?
 a) 35% b) 70% c) 80% d) 62%

21. What was the difference between the total number of boys and girls appeared in 2008 and the total number of boys and girls appeared in 2006?
a) 400 b) 1600 c) 2200 d) 3000
22. How many girls did not qualify in 2005?
a) 1000 b) 500 c) 1200 d) 1800

Direction for the question: Analyse the graph/s given below and answer the question that follows:

The graph given below shows the quantity of milk and food grains consumed annually along with female and male population (in millions). Use the data to answer the questions that follow.



23. When was the per capita production of milk least?
a) 1990 b) 1992 c) 1994 d) 1996
24. When was the per capita production of foodgrains most?
a) 1992 b) 1993 c) 1994 d) 1995
25. In which year was the difference between the percentage increase in the production of food grains and milk maximum?
a) 1993 b) 1994 c) 1995 d) 1996
26. If milk contains 320 cal. and foodgrains contains 160 cal. in which year was the per capita consumption of cal. highest?
a) 1993 b) 1994 c) 1995 d) 1996
27. If 1 gallon milk contains 120 grms of a particular nutrient and 1 tone of foodgrains contains 80 grms of the same nutrient. In which of the availability of the nutrient maximum?
a) 1993 b) 1994 c) 1995 d) 1996
28. In reference to last question In which year was the per capita consumption of the nutrient highest?
a) 1993 b) 1994 c) 1995 d) 1996

Answer Key

1. D	2. A	3. C	4. D	5. A	6. C	7. C	8. B	9. D	10. C
11.A	12.A	13.C	14.B	15.B	16.D	17.A	18.A	19.D	20.D
21.A	22.B	23.A	24.D	25.C	26.C	27.C	28.C		