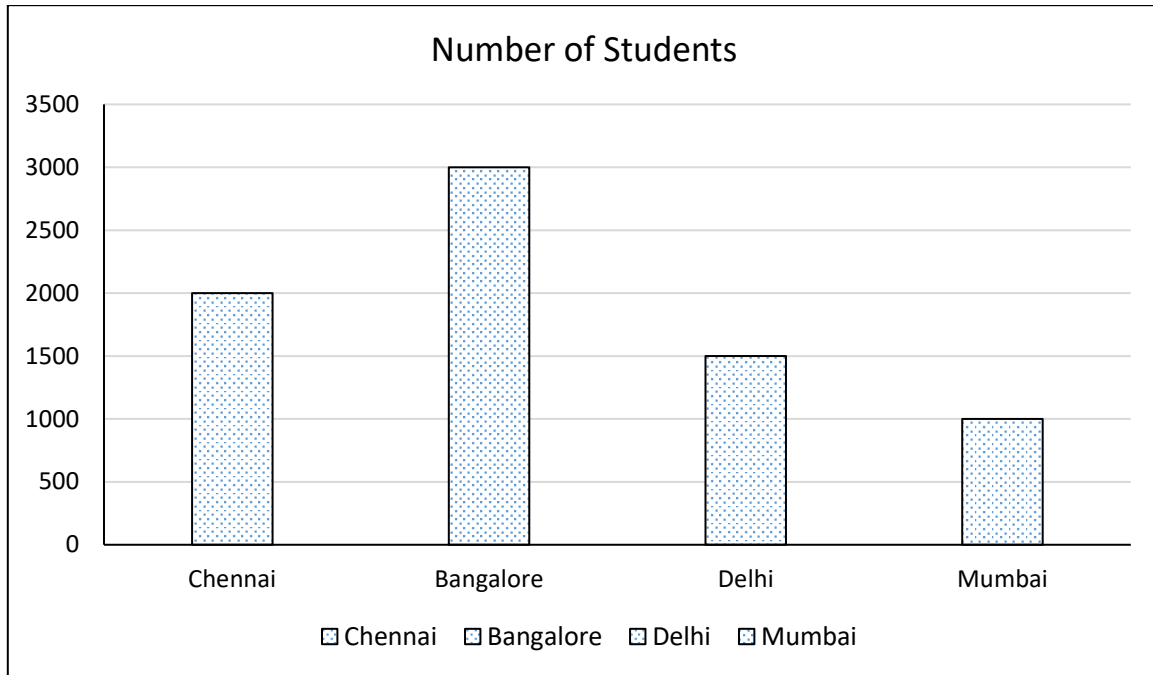


BAR GRAPH – I

Direction: Study the following information carefully and answer the given questions:

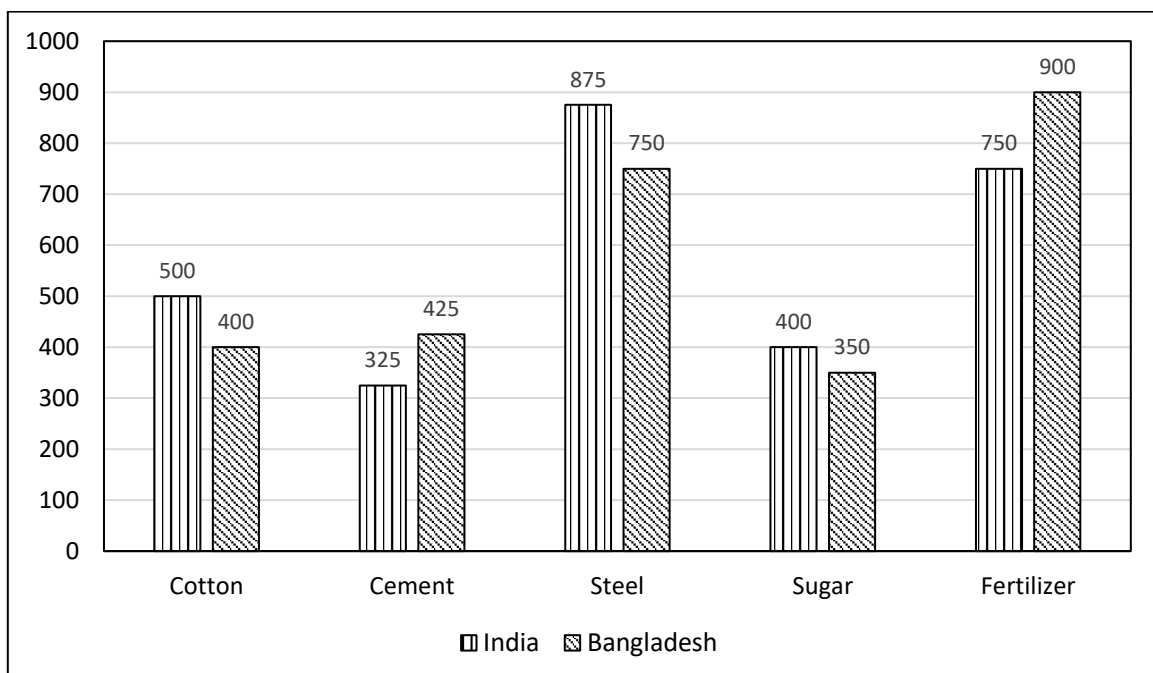
The given bar graph shows the number of students appearing the exam from 4 different cities.



- The number of the students appearing the exam from Chennai is what percent of the number of students appearing for exam from Delhi and Mumbai together?
A) 40% B) 60% C) 80% D) 90% E) None of these
- If the number of passed students from Bangalore is 45%, then find the number of Bangalore students who failed in the examination.
A) 1540 B) 1650 C) 1760 D) 1830 E) None of these
- What is the average number of students appearing for exam from all the cities together?
A) 1875 B) 1925 C) 1950 D) 1890 E) None of these

Directions: Study the following information carefully and answer the given questions:

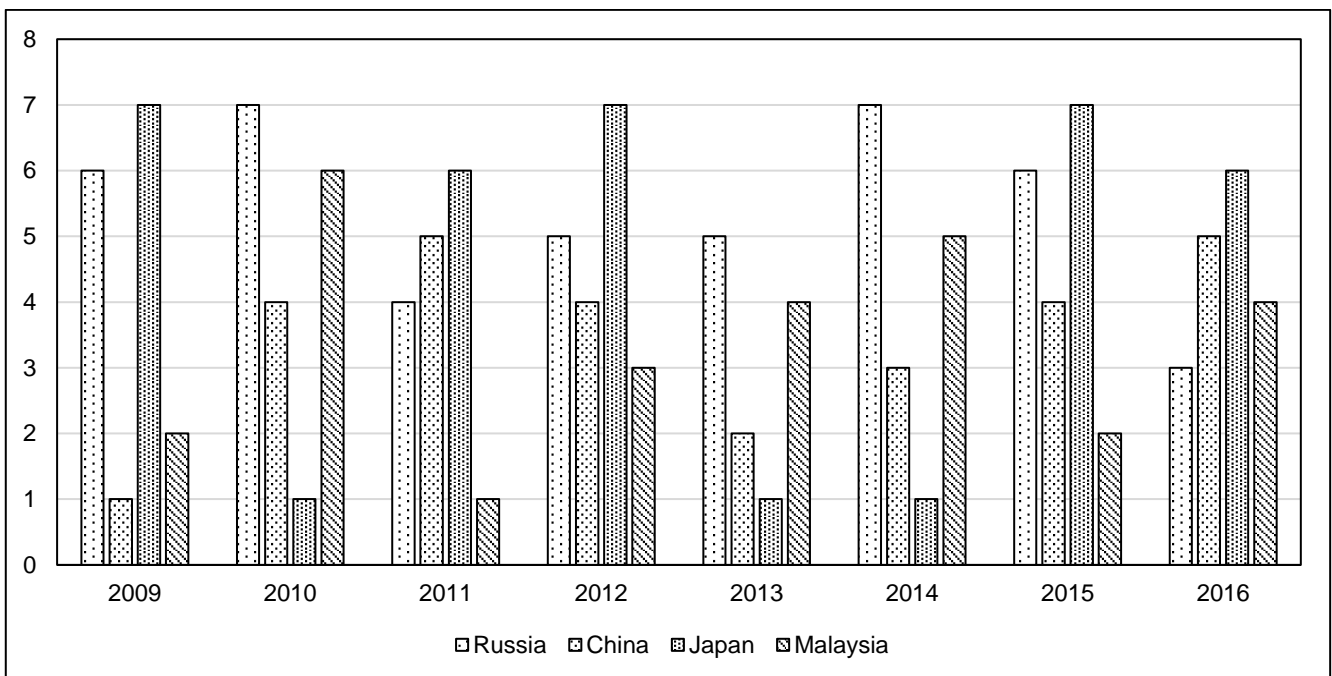
The following bar graph shows the total number of factories of various industries in India and Bangladesh.



4. If the ratio of production of sugar in India to that of Bangladesh is 6 : 5, then find the ratio of productivity (Production/number of factories) in India to that of Bangladesh?
 a) 35 : 17 b) 27 : 16 c) 21 : 20 d) 45 : 33 e) None of these
5. The number of fertilizer factories in both the countries together is what percentage of the number of cement factories in both the countries together?
 a) 220 % b) 250 % c) 170 % d) 190 % e) None of these
6. If 25 % of the cotton factories in India is running in rural areas and 70 % of steel factories in Bangladesh is running in urban areas, then find the difference between the total number of cotton factories in India in urban areas to that of total number of steel factories in Bangladesh in rural areas?
 a) 180 b) 225 c) 260 d) 150 e) None of these
7. The total number of factories in India in all the given factories together is approximately what percentage more/less than the total number of factories in Bangladesh in all the given factories together?
 a) 13 % less b) 1 % more c) 1 % less d) 13 % more e) 20 % less
8. Find the total number of Cement, Steel and Sugar factories in both the countries together?
 a) 2850 b) 3670 c) 3125 d) 2545 e) None of these

Directions: Study the column graph carefully and answer the questions given below:

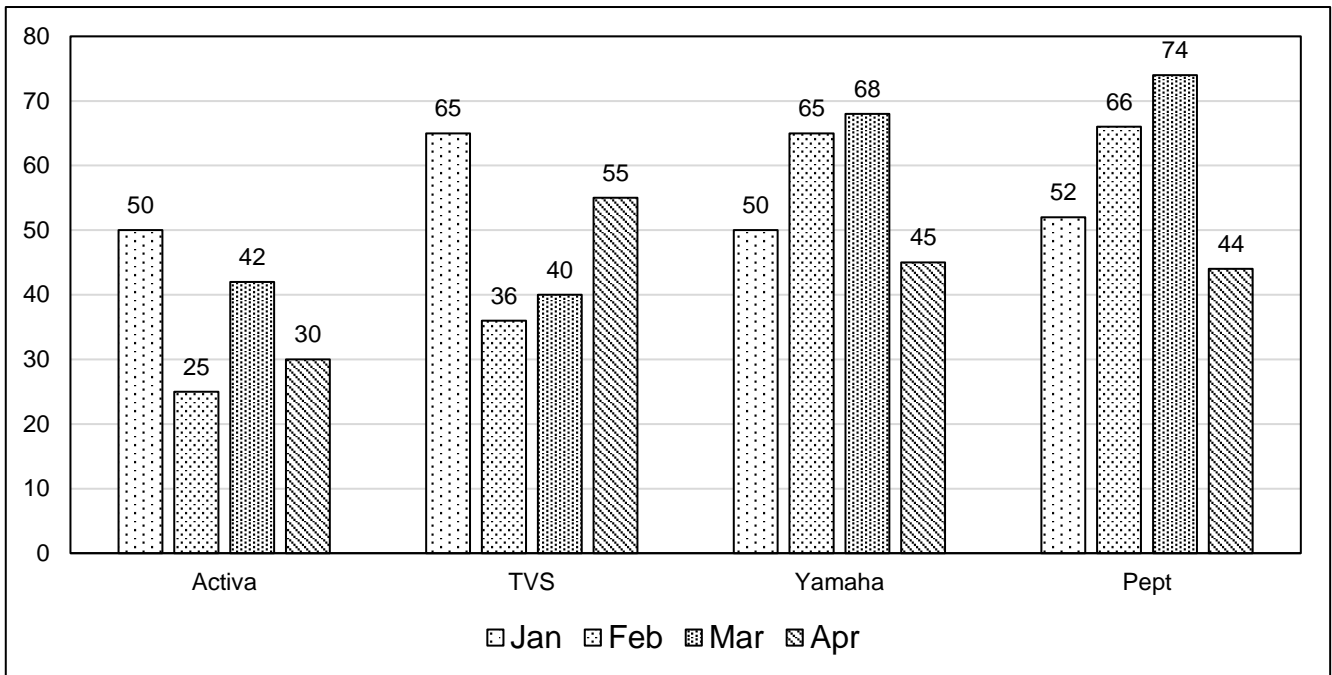
The number of visitors travelled to India (in lakhs) from four different countries in different years



9. What is the difference between the number of visitors from China in 2014 and that from Malaysia in 2009?
 a) 2.5 lakh b) 1 lakh c) 1.5 lakh d) 1.75 lakh e) 1.9 lakh
10. The total number of visitors in 2013 is what per cent of the total number of visitors in 2016?
 a) 58.66% b) 82.33% c) 48.66% d) 66.67% e) 50.25%
11. If the visitors go to amusement park, the entry fees for Malaysia visitors is 350 and that of China visitors is 450 for all visitors then what is the total income from both the visitors during 2014 to 2016?
 a) 87.5 crore b) 95 crore c) 92.5 crore d) 77.5 crore e) 90 crore
12. From which country the number of visitors travelled to India is maximum for the eight years?
 a) Russia b) China c) Japan d) Either Japan or China e) Malaysia
13. If the visitors from Russia donate 400 rupees each for a children foundation and the visitors from Japan donate for the same foundation 20% more than that of Russian visitors, then what is the ratio of the donation of Russia in 2015 to that of Japan in 2016?
 a) 3 : 10 b) 5 : 9 c) 4 : 7 d) 6 : 5 e) 5 : 6

Directions: Study the following information carefully and answer the given questions.

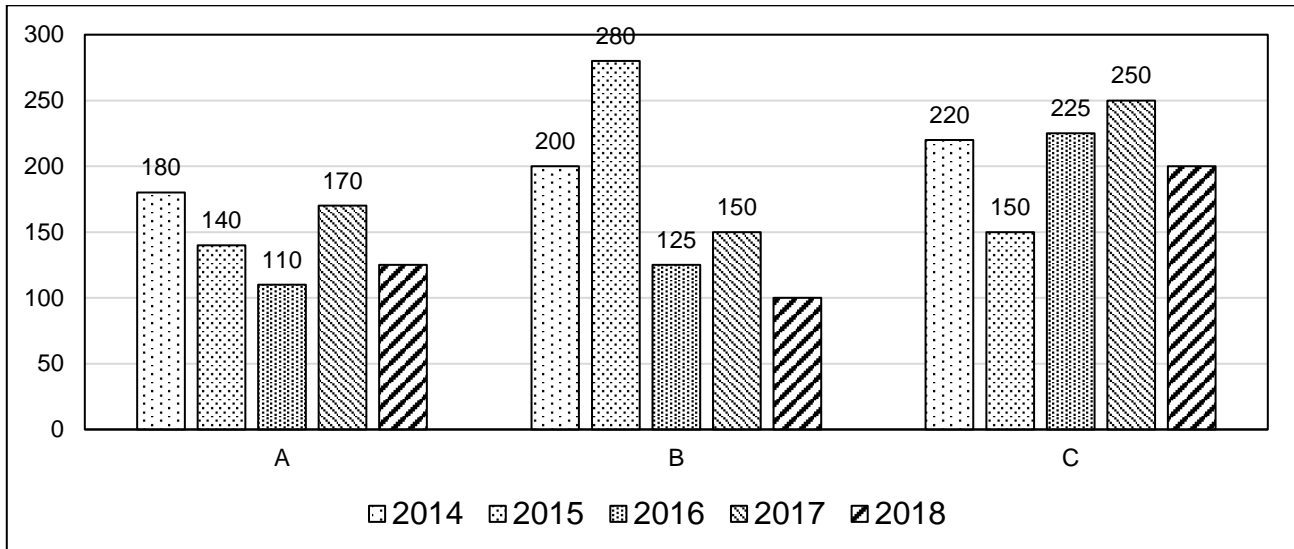
Following bar graph shows the monthly sales turn over (In lakhs) of various scooters in 5 different months.



14. Total sales turnover of Activa in all the given months together is approximately what percentage of total sales turnover of all the given scooters in the month of Feb?
 - a) 60 %
 - b) 70 %
 - c) 77 %
 - d) 95 %
 - e) 115 %
15. Find the average sales turnover of Yamaha in all the given months together?
 - a) 57 lakhs
 - b) 63 lakhs
 - c) 52 lakhs
 - d) 68 lakhs
 - e) None of these
16. Find the difference between the total sales turnovers of all the given scooters in the month of Jan to that of Apr?
 - a) 36 lakhs
 - b) 32 lakhs
 - c) 25 lakhs
 - d) 43 lakhs
 - e) None of these
17. Find the respective ratio between the total sales turnovers of Pept in all the given months together to that of total sales turnover of all the given scooters in the month of mar?
 - a) 34 : 31
 - b) 59 : 56
 - c) 42 : 37
 - d) 12 : 5
 - e) None of these
18. Total sales turnover of Activa in Mar and Apr together is approximately what percentage more/less than the total sales turnover of Tvs in Feb and Mar together?
 - a) 15 % less
 - b) 10 % less
 - c) 5 % less
 - d) 5 % more
 - e) 10 % more

Directions: Study the following charts and answer the given questions.

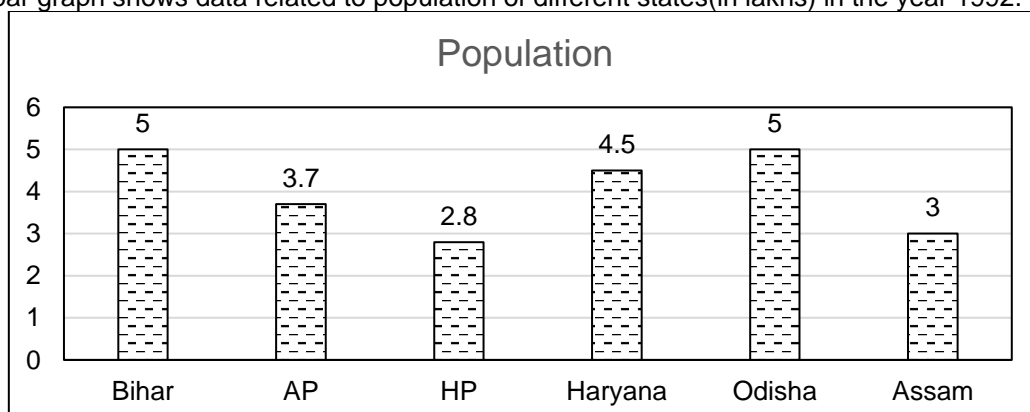
The following bar graph shows that the number of students studying in branches A, B and C in a particular college from 2014 to 2018.



19. By what percentage is the total number of students studying in branch B greater than those in branch C in the year 2015?
a) 32.67% b) 86.67% c) 93.67% d) 64.67% e) 54.67%
20. What is the ratio between the total students in branch A from 2016 to 2018 to the total students in branch C for 2014 and 2016?
a) 83:78 b) 52:75 c) 67:82 d) 63:89 e) 82:119
21. What is the difference in percentage change in the number of students of branch A and branch C in the year 2018?
a) 8.3% b) 6.2% c) 7.2% d) 6.47% e) 2.73%
22. In the year 2019, the number of students in branches A, B and C increases by 10%, 12.5% and 15% respectively from the year 2014, what is the difference between the total number of students across branches in 2019 and 2017?
a) 179 b) 163 c) 180 d) 106 e) 633
23. What is the percentage change in the number of students of branch B for the year 2017 as compared to 2016?
a) 25% b) 20% c) 35% d) 15% e) 50%

Directions: Study the following bar graph and table carefully to answer the questions given below:

The following bar graph shows data related to population of different states(in lakhs) in the year 1992.

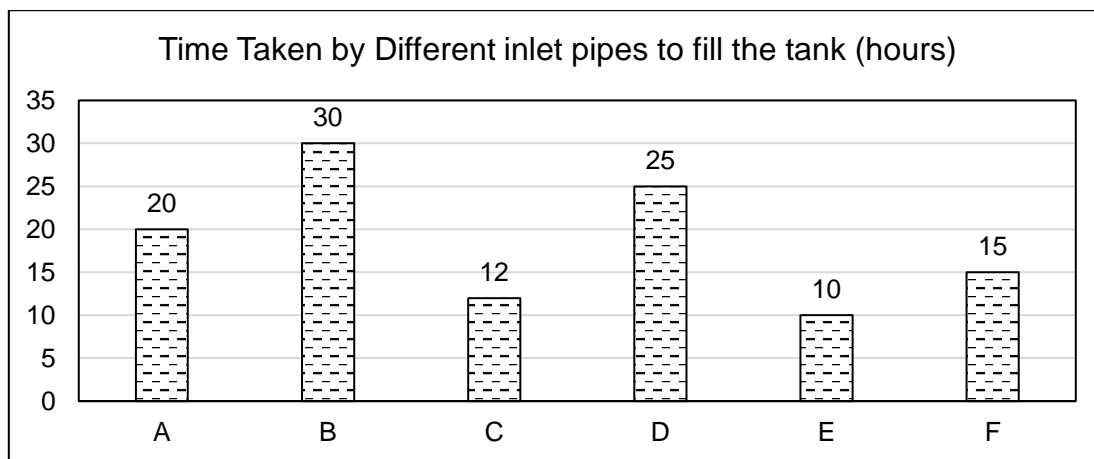


The following table shows the ratio between male to female and literate to illiterate and graduates to under graduates.

States	Male : Female	Literate : Illiterate	Graduate : Undergraduate
Bihar	3:2	1:4	4:7
AP	4:6	4:1	6:7
HP	3:4	2:1	3:2
Haryana	5:4	3:2	7:8
Odisha	2:3	2:3	4:5
Assam	2:1	7:2	6:7

24. If in the year 1993, the population of AP is increased by 10 % and the population of Bihar is increased by 12 % compared to the previous year, then find the ratio of the population of AP to that of Bihar in the year 1993?
 A) 521 : 540 B) 405 : 530 C) 408 : 505 D) 407 : 560 E) None of these
25. The total female population in AP is approximately what percentage of total female population in HP?
 A.90 % B.110 % C.120 % D.140 % E.85 %
26. If 70% of total number of literate population in Assam is graduate, then find the total number of under graduates in the Assam in the year 1992?
 A.65300 B.70000 C.62000 D.82100 E.None of these
27. In Haryana, If 70% of the females are literate and 75% of the males are literate, then find the total number of illiterates in the state?
 A.122500 B.95000 C.84000 D.76000 E.None of these
28. Find the ratio between the total number of literate population in Assam to that of total number of literate population in Bihar?
 A.2 : 5 B.3 : 5 C.7 : 3 D.2 : 3 E.None of these

Directions: Study the following information carefully and answer the given questions:



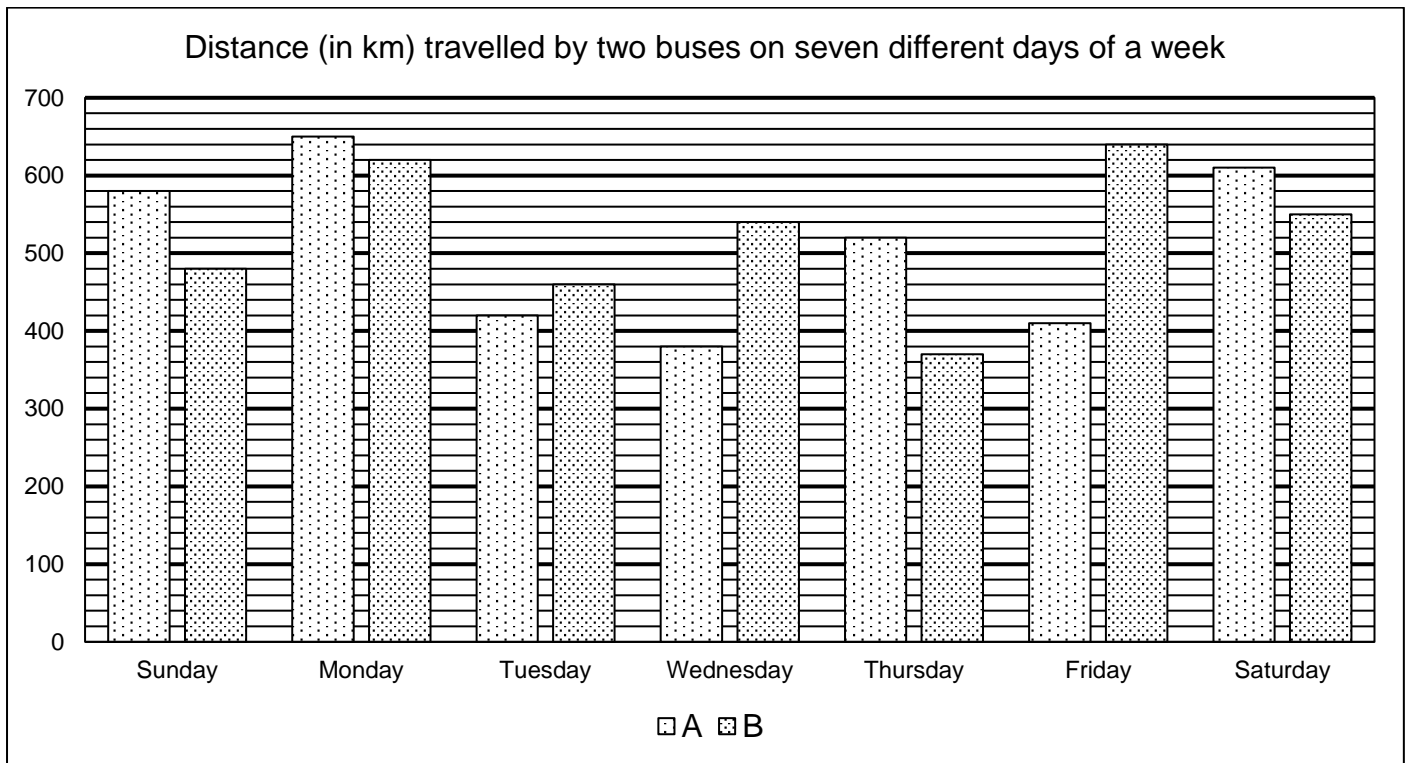
The Table below shows time taken by different outlet pipes to empty the tank:

Pipes	Time (Hours)
P	15
Q	10
R	12
S	6
T	8
U	15

29. Pipe A and C were opened simultaneously to fill an empty tank. After some time pipe C was closed, then pipe A took 4 hours to fill the rest of the tank. For how much time was the pipe A and C opened together?
 a) 6 b) 18 c) 4 d) 7 e) 2
30. Pipe D and F were opened to fill the empty but when the tank was 64% full Pipe B was also opened find the total time taken to fill the tank?
 a) $8\frac{4}{7}$ b) $2\frac{3}{8}$ c) $5\frac{2}{19}$ d) $4\frac{1}{9}$ e) None of these
31. If Pipes A and B were opened together to fill a tank but accidentally pipe P was also opened with Pipe A and B then find the time taken to fill the empty tank?
 a) 56 b) 24 c) 25 d) 60 e) 14
32. The pipes C and E filled the empty tank of capacity 3300 liters in $5\frac{5}{11}$ hours then find how many liters of water pipe C fills in one hour?
 a) 250 b) 370 c) 156 d) 275 e) 450

33. If pipes S and T were used to drain water from the tank but due to hurry these pipes were not opened properly, so the pipes allowed $\frac{1}{2}$ th and $\frac{2}{3}$ part of water respectively, how long will they take to empty the tank?
 a) 12 b) 24 c) 6 d) 7 e) None of these

Directions: Study the following information carefully and answer the questions given below:



The following table represents the ratios of distances travelled by bus A and bus C on seven different days.

Day	Sunday	Monday	Tuesday	Wednesday	Thursday	Friday	Saturday
A : C	29 : 28	13 : 15	11 : 9	19 : 17	13 : 7	10 : 11	5 : 9

34. Distance travelled by C on Tuesday is what percent of the distance travelled by C on Saturday?
 a) 27.12% b) 37.12% c) 32.78% d) 29.45% e) None of these
35. Find the respective ratio of the distance travelled by A on Monday and Wednesday together and distance travelled by B on the same days.
 a) 117:104 b) 103:116 c) 104:117 d) 116:103 e) None of these
36. Find the difference between distance travelled by A in all the days together and distance travelled by B in all the days together.
 a) 60 km b) 50 km c) 40 km d) 70 km e) None of these
37. Distance travelled by C on Friday is what per cent more/less than the distance travelled by B on Friday.
 a) 29.53% more b) 12.23% less c) 12.23% more d) 29.53% less e) None of these
38. Find the sum of the distance travelled by C throughout the week.
 a) 3567 Km b) 4533 Km c) 5432 Km d) 3839 Km e) None of these

Answer Key

1. C	2. B	3. A	4. C	5. A	6. D	7. B	8. C	9. B	10. D
11. C	12. A	13. E	14. C	15. C	16. D	17. B	18. C	19. B	20. E
21. E	22. D	23. B	24. D	25. D	26. B	27. A	28. C	29. A	30. A
31. D	32. D	33.	34. C	35. B	36. D	37. D	38. D		